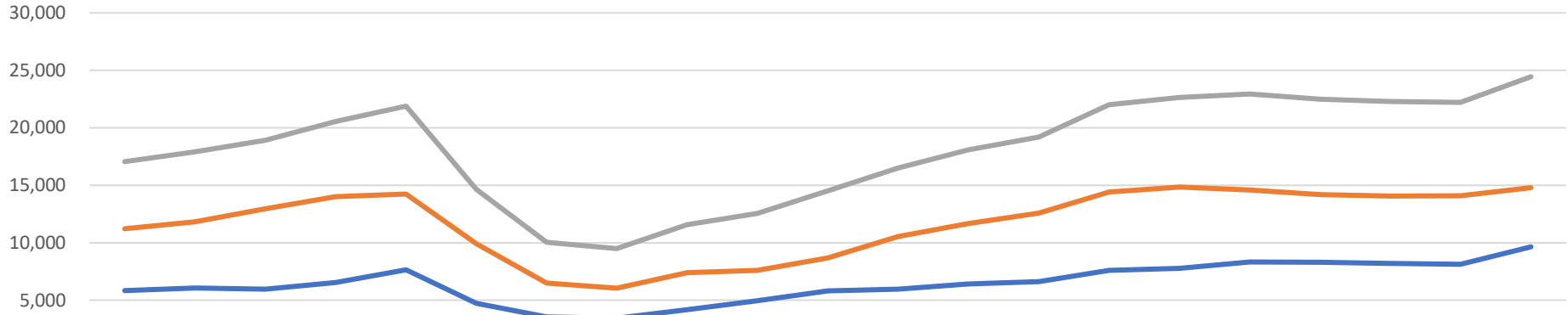


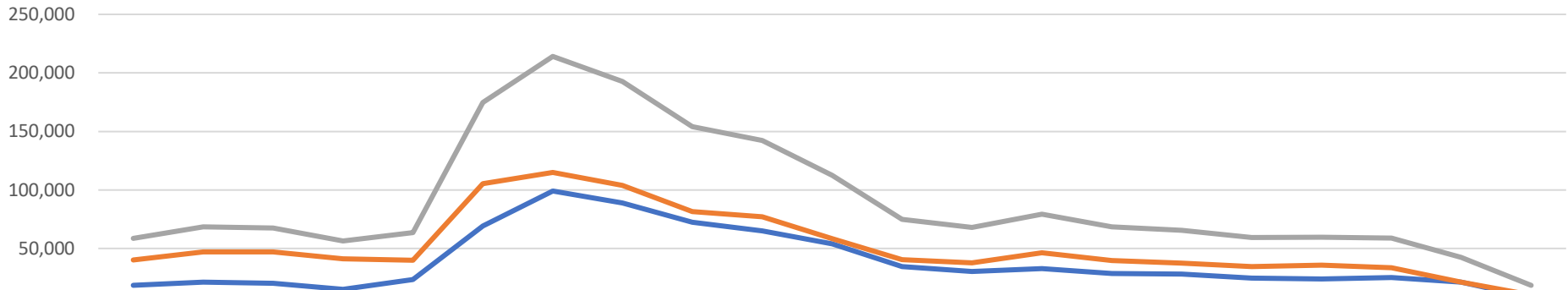
COUNT OF SALES AND LISTINGS

SALES



	2001	2002	2003	2004	2005	2006	2007	2008	2009	2010	2011	2012	2013	2014	2015	2016	2017	2018	2019	2020	2021
Condo	5,848	6,076	5,957	6,544	7,646	4,737	3,545	3,444	4,181	4,956	5,818	5,969	6,416	6,625	7,599	7,791	8,336	8,297	8,206	8,137	9,651
Single Family	11,225	11,841	12,955	14,020	14,256	9,915	6,489	6,054	7,400	7,598	8,695	10,536	11,681	12,583	14,408	14,849	14,603	14,199	14,076	14,092	14,798
Total	17,073	17,917	18,912	20,564	21,902	14,652	10,034	9,498	11,581	12,554	14,513	16,505	18,097	19,208	22,007	22,640	22,939	22,496	22,282	22,229	24,449

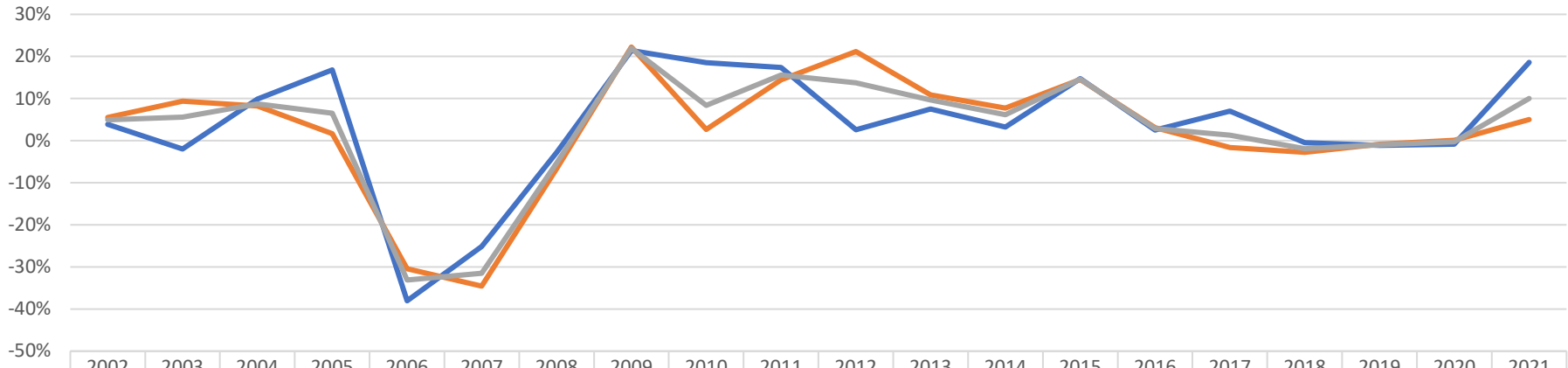
LISTINGS



	2001	2002	2003	2004	2005	2006	2007	2008	2009	2010	2011	2012	2013	2014	2015	2016	2017	2018	2019	2020	2021
Condo	18,501	21,363	20,337	15,136	23,506	69,337	99,107	88,814	72,532	64,970	53,887	34,553	30,327	32,916	28,697	28,146	24,841	24,012	25,330	21,216	8,206
Single Family	40,265	47,069	47,069	41,257	40,004	105,46	114,97	103,84	81,590	77,227	58,530	40,451	37,708	46,458	39,787	37,400	34,678	35,706	33,463	21,292	10,323
Total	58,766	68,432	67,406	56,393	63,510	174,80	214,08	192,65	154,12	142,19	112,41	75,004	68,035	79,374	68,484	65,546	59,519	59,718	58,793	42,508	18,529

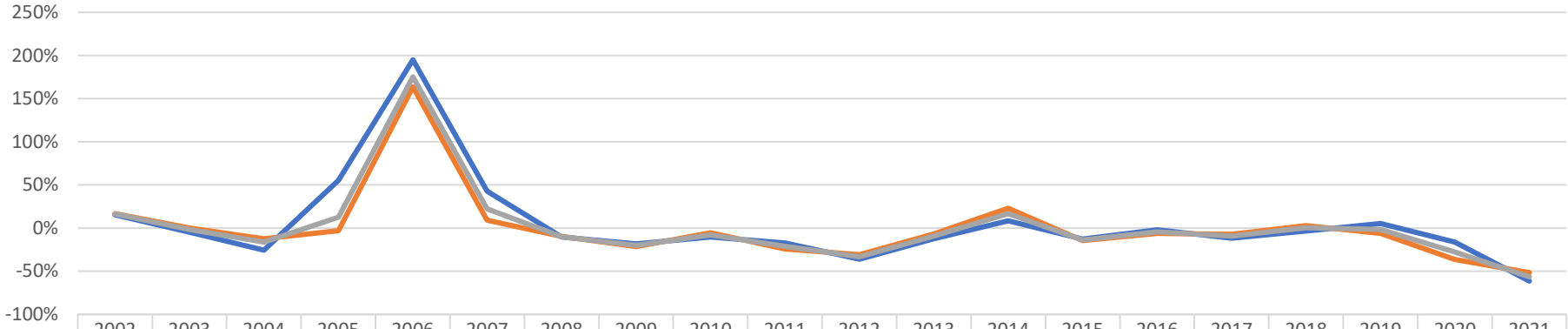
CHANGE OVER PRIOR PERIOD

SALES



	2002	2003	2004	2005	2006	2007	2008	2009	2010	2011	2012	2013	2014	2015	2016	2017	2018	2019	2020	2021
Condo	4%	-2%	10%	17%	-38%	-25%	-3%	21%	19%	17%	3%	7%	3%	15%	3%	7%	0%	-1%	-1%	19%
Single Family	5%	9%	8%	2%	-30%	-35%	-7%	22%	3%	14%	21%	11%	8%	15%	3%	-2%	-3%	-1%	0%	5%
Total	5%	6%	9%	7%	-33%	-32%	-5%	22%	8%	16%	14%	10%	6%	15%	3%	1%	-2%	-1%	0%	10%

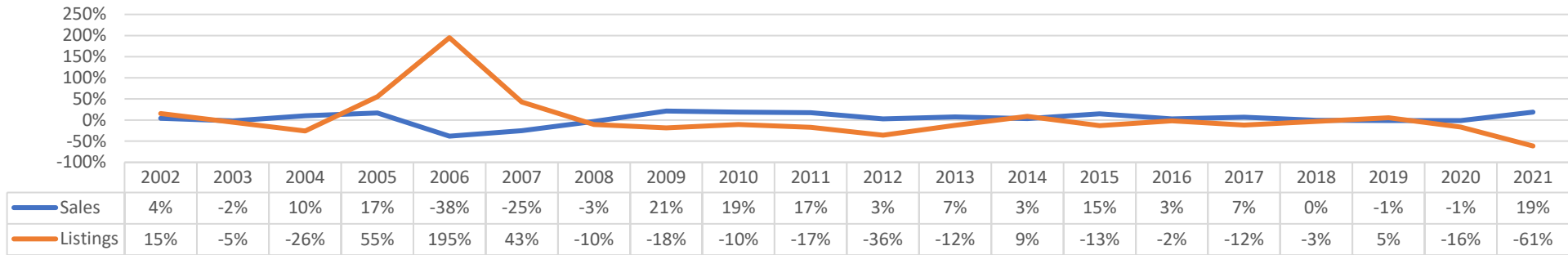
LISTING



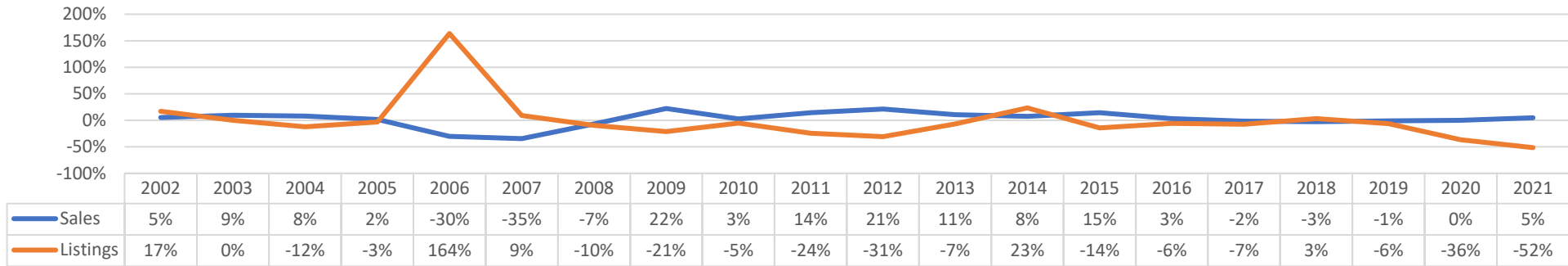
	2002	2003	2004	2005	2006	2007	2008	2009	2010	2011	2012	2013	2014	2015	2016	2017	2018	2019	2020	2021
Condo	15%	-5%	-26%	55%	195%	43%	-10%	-18%	-10%	-17%	-36%	-12%	9%	-13%	-2%	-12%	-3%	5%	-16%	-61%
Single Family	17%	0%	-12%	-3%	164%	9%	-10%	-21%	-5%	-24%	-31%	-7%	23%	-14%	-6%	-7%	3%	-6%	-36%	-52%
Total	16%	-1%	-16%	13%	175%	22%	-10%	-20%	-8%	-21%	-33%	-9%	17%	-14%	-4%	-9%	0%	-2%	-28%	-56%

CHANGE OVER PRIOR PERIOD

CONDO - SALES vs LISTINGS



SINGLE FAMILY HOME - SALES v LISTINGS



CONDO & SINGLE FAMILY HOME - SALES v LISTINGS

